

2024 annual report to the Community

# Paracombe Primary and Preschool and Paracombe Preschool

Paracombe Primary and Preschool number: 0327

Paracombe Preschool number: 1830

Partnership: Torrens Valley



School principal:

Bianca Laister

Signature

Date of endorsement:

03/02/2025



Government  
of South Australia  
Department for Education

# Context Statement

Paracombe Primary and Preschool caters for students from P-6. At the time of this report, the enrolment in 2024 is 75. Paracombe Primary and Preschool is classified as Category 7 on the Department for Education Index of Educational Disadvantage. At the time of this report, the school population includes, 12% students with disabilities. Further information about the school is available on the school's website (including its context statement), as well as the My School website.

Information about Paracombe Preschool is available on the centres website, as well as the Australian Children's Education and Care Quality Authority (ACECQA) website.

Data Source: Department for Education data holdings from Mid census captured in AUGUST 2024.

## Governing Council Report

2024 was a great year at Paracombe Primary and Preschool.

On paper, the facilities are in great shape, the grounds are looking lush, the bank account is healthy, and we have continued to grow our student enrolments. Our lower year levels are now effectively full, which for a small Adelaide Hills primary school is a fantastic position to be in, and bodes well for our future sustainability.

Our thriving Play Group and Preschool continue to play a crucial role in acclimatizing local families to our community, providing a clear pathway to school enrollment. A massive thank you to Roxanne and Leonie for the exceptional work they do.

While on paper things are good, it is perhaps the intangibles – the social cohesion of our school community – that is most exciting. Parents and family members have continued to volunteer at (unusually!) high rates, there was strong participation in the Parents and Friends events, and assemblies, sports days, science week and other gathering opportunities continue to be well attended. There is tremendous buy-in from our Paracombe families.

We have new school values, our site-improvement plan has been refined – both key strategic developments - however, I think my favourite indicator of health came from 2024's 'Shed Project.' Student-led, collaborative, creative, inclusive, and community-centred, the Shed project - conceived and facilitated by the 2024 year six cohort – highlights what makes Paracombe special. Our students are problem solvers, hard-workers, and community builders, and THAT is worth celebrating!

A huge thank you to Principal Bianca and the whole staff for cultivating such a beautiful place to grow and learn. And a colossal thank you to my Governing Council colleagues for their commitment to making this group function and flourish – particularly office bearers Mellissa Preusker, Lisa Keenihan and Nikki Ward.

The best is yet to come!

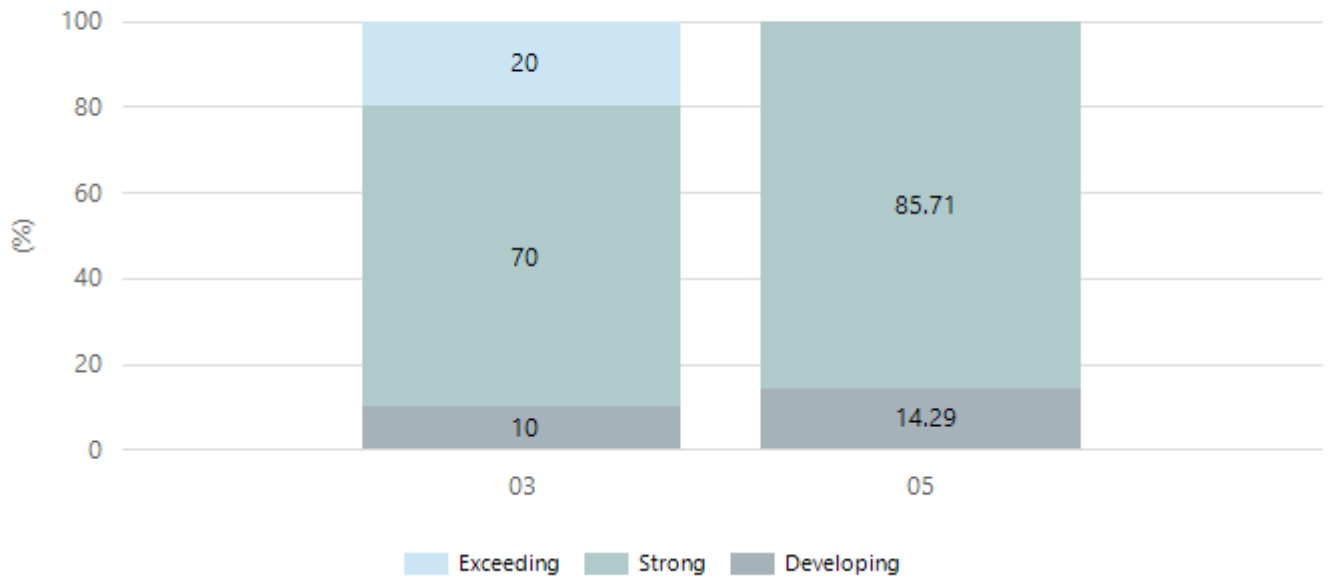
John Day, Governing Council Chairperson.

## Performance Summary

### NAPLAN Proficiency

In 2023 the Australian Curriculum, Assessment and Reporting Authority (ACARA) - a Commonwealth Independent statutory authority - announced changes to NAPLAN performance reporting. The new approach replaces the previous numerical NAPLAN bands and the national minimum standard.

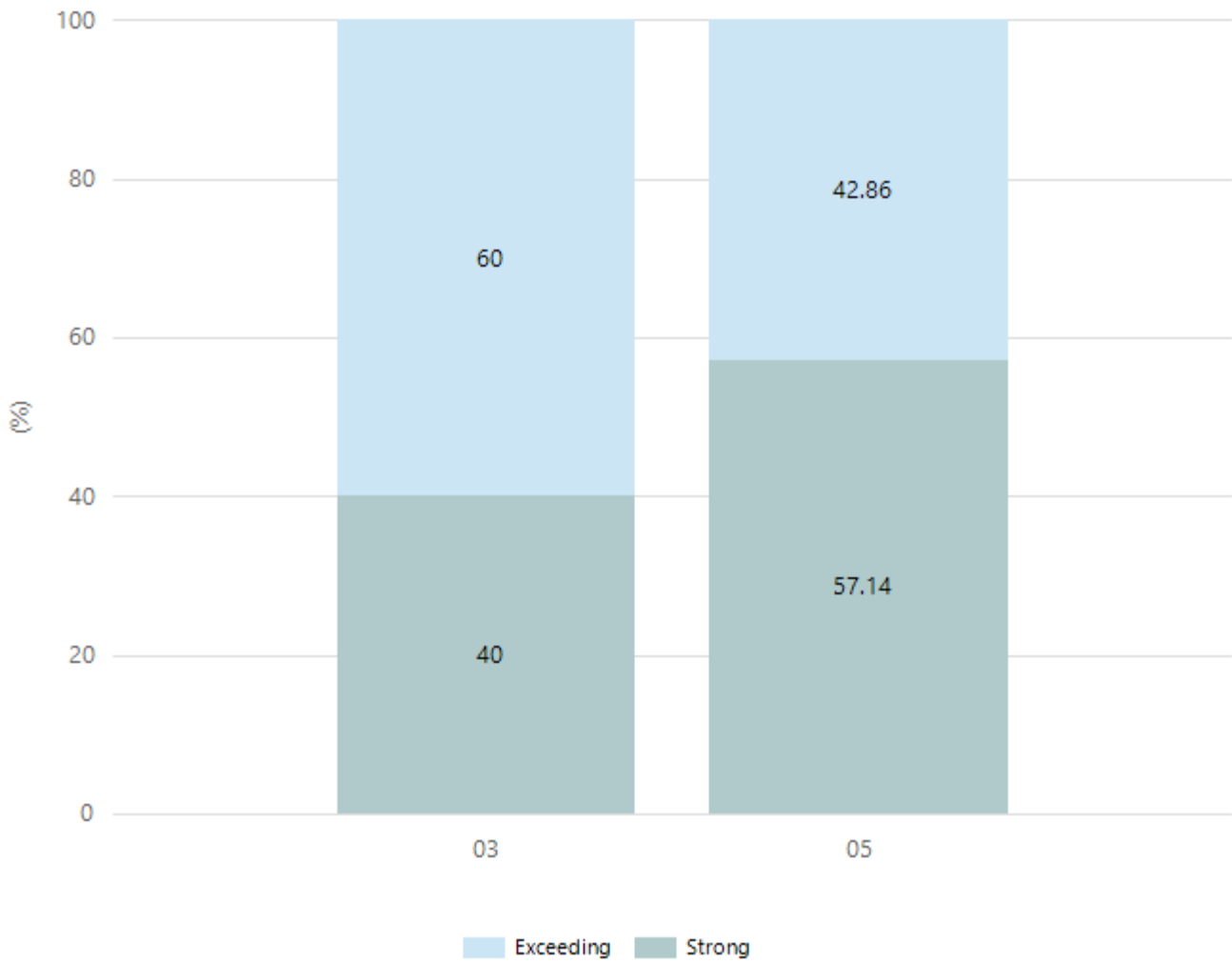
## Numeracy



Year Level	03	05
Exceeding	2	
Strong	7	6
Developing	1	1
Total	10	7

Data Source: Department for Education Assessment Data Holdings, 2024. If there are less than 6 students who sat NAPLAN in a school, no information will be shown. If a year level has less than 6 students, that year level will not be shown in NAPLAN results.

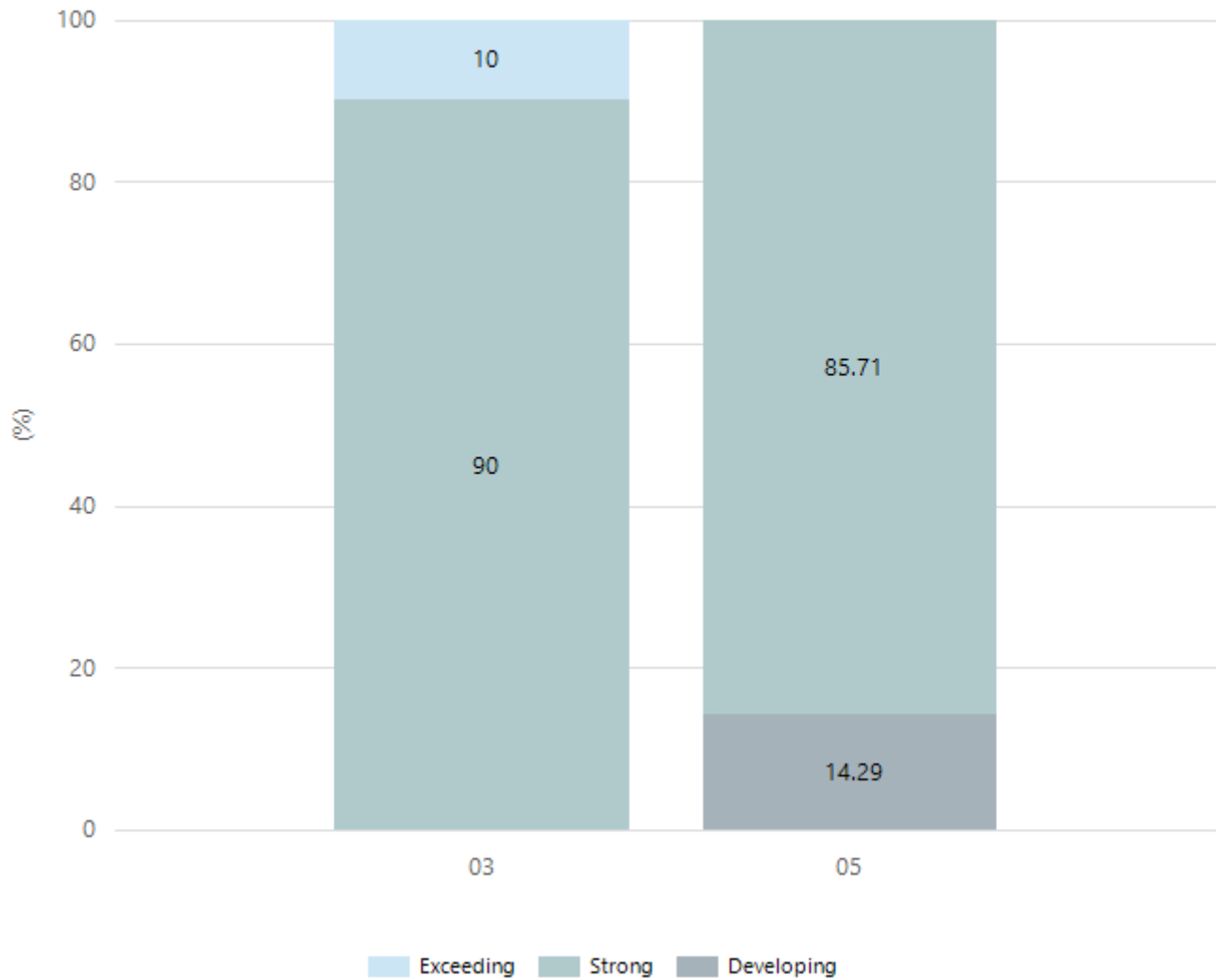
## Reading



Year Level	03	05
Exceeding	6	3
Strong	4	4
Total	10	7

Data Source: Department for Education Assessment Data Holdings, 2024. If there are less than 6 students who sat NAPLAN in a school, no information will be shown. If a year level has less than 6 students, that year level will not be shown in NAPLAN results.

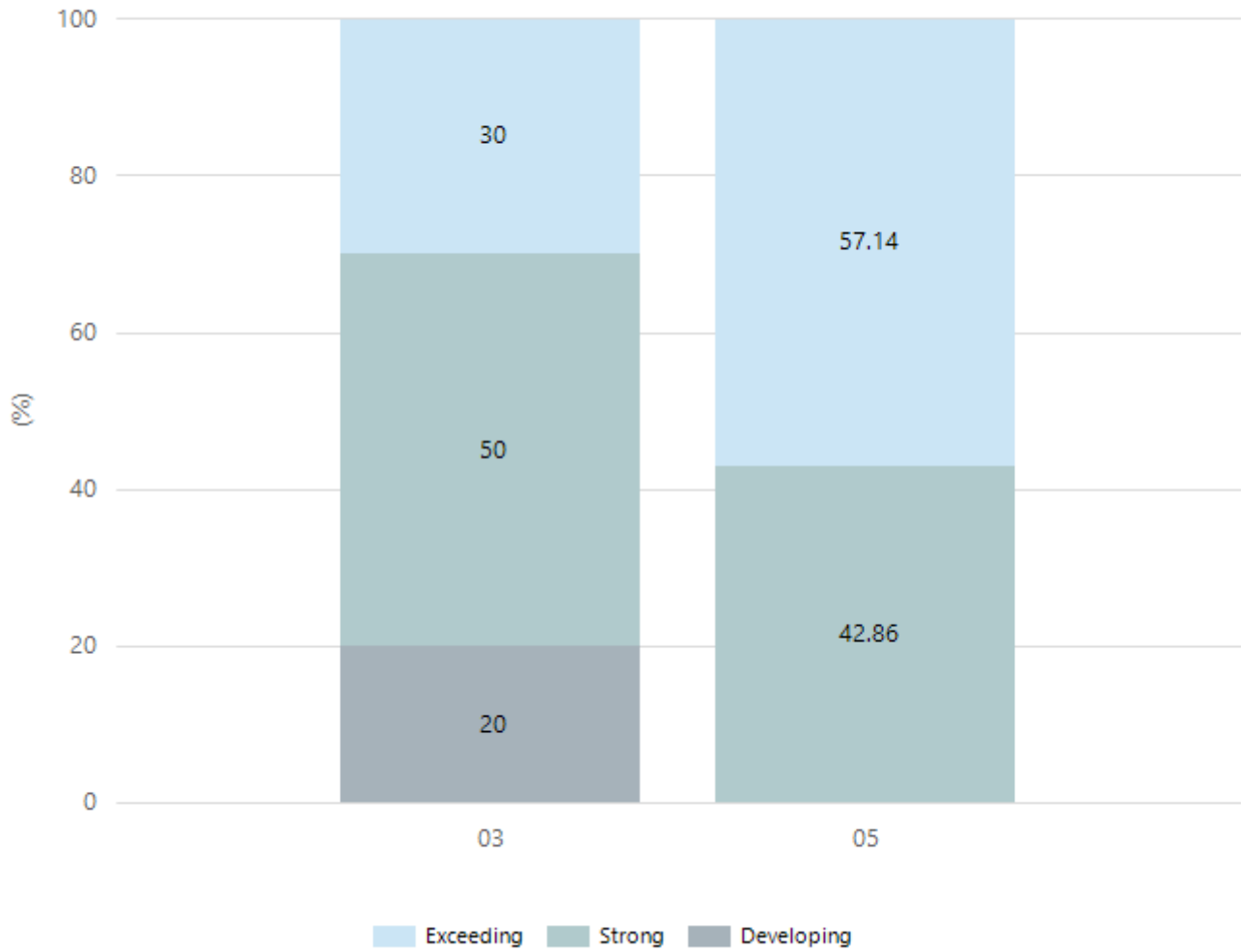
## Writing



Year Level	03	05
Exceeding	1	
Strong	9	6
Developing		1
Total	10	7

Data Source: Department for Education Assessment Data Holdings, 2024. If there are less than 6 students who sat NAPLAN in a school, no information will be shown. If a year level has less than 6 students, that year level will not be shown in NAPLAN results.

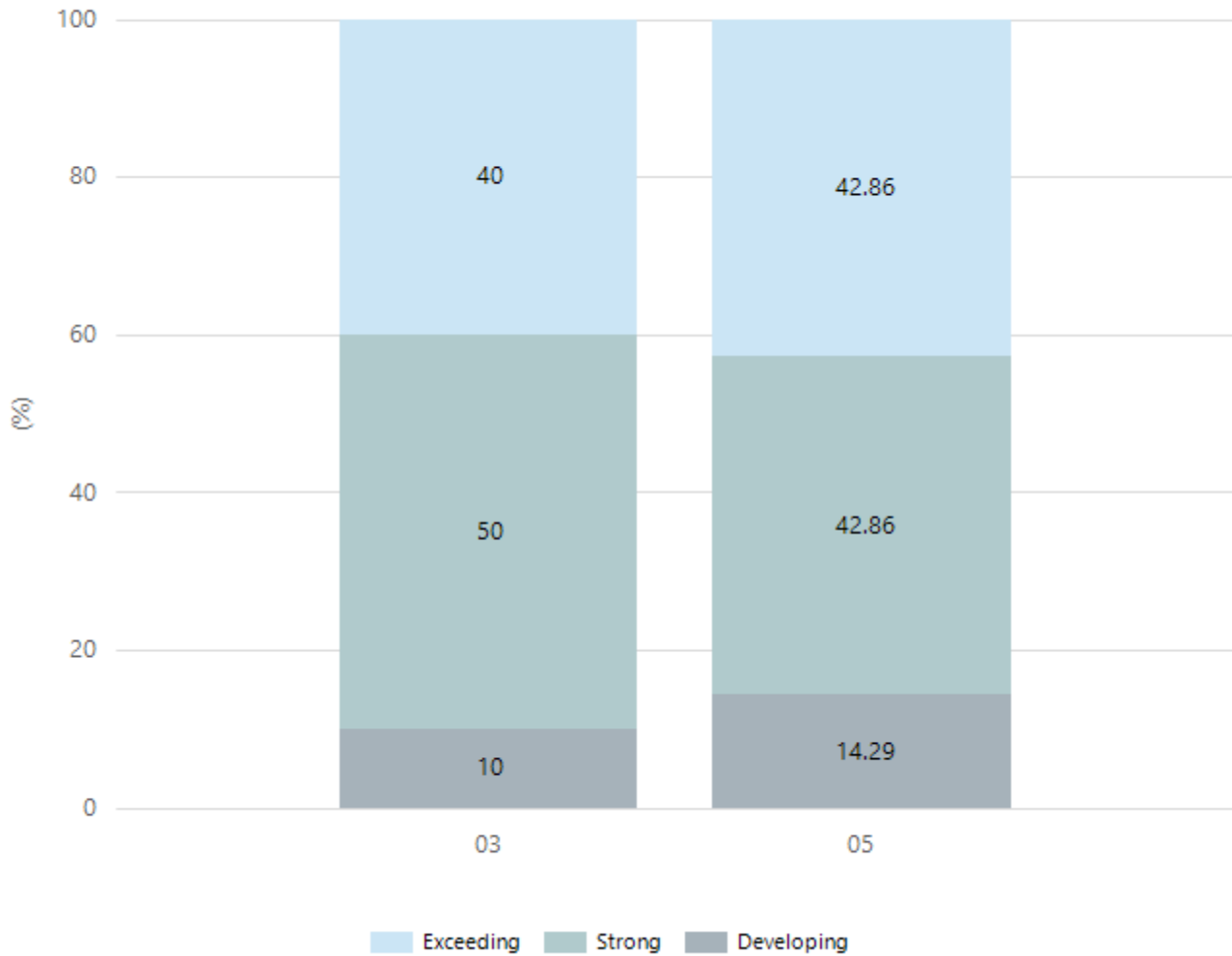
## Grammar



Year Level	03	05
Exceeding	3	4
Strong	5	3
Developing	2	
Total	10	7

Data Source: Department for Education Assessment Data Holdings, 2024. If there are less than 6 students who sat NAPLAN in a school, no information will be shown. If a year level has less than 6 students, that year level will not be shown in NAPLAN results.

## Spelling



Year Level	03	05
Exceeding	4	3
Strong	5	3
Developing	1	1
Total	10	7

Data Source: Department for Education Assessment Data Holdings, 2024. If there are less than 6 students who sat NAPLAN in a school, no information will be shown. If a year level has less than 6 students, that year level will not be shown in NAPLAN results.

## Preschool Attendance

	Term 1	Term 2	Term 3	Term 4
2021 centre	98.2%	76.8%	90.6%	94.8%
2022 centre	96.4%	80.4%	88.5%	78.2%
2023 centre	98.3%	83.3%	86.5%	96%
2024 centre	87.5%		90.9%	

Based on attendances recorded in the two-week reference period each term. Data for eligible enrolments as described in the department's Enrolment policy. Attendance rates may differ to previous reporting with the transfer from calculations based on deemed attendance to actual attendance using booked hours divided by attended hours. Data Source: Department for Education Attendance Data, Semester 1 Report 2024. A blank cell indicates there we no students enrolled.

## School Attendance

Year Level	2022	2023	2024
Reception	90.4%	90.2%	91.1%
Year 01	89.4%	93.3%	93.8%
Year 02	89.4%	92.5%	93.6%
Year 03	91.1%	93.8%	93.1%
Year 04	86.9%	92.8%	94.8%
Year 05	90.2%	92.3%	94.5%
Year 06	82.8%	90.8%	90.8%
Total	88.9%	92.2%	92.8%

Data Source: Department for Education Attendance Data, Semester 1 Report 2024. A blank cell indicates there we no students enrolled. 'Primary Other' includes students enrolled in specialised education options. 'Secondary Other' includes students who have already spent a year at Year 12 and elected to undertake further study at Year 12.

## Attendance Comment

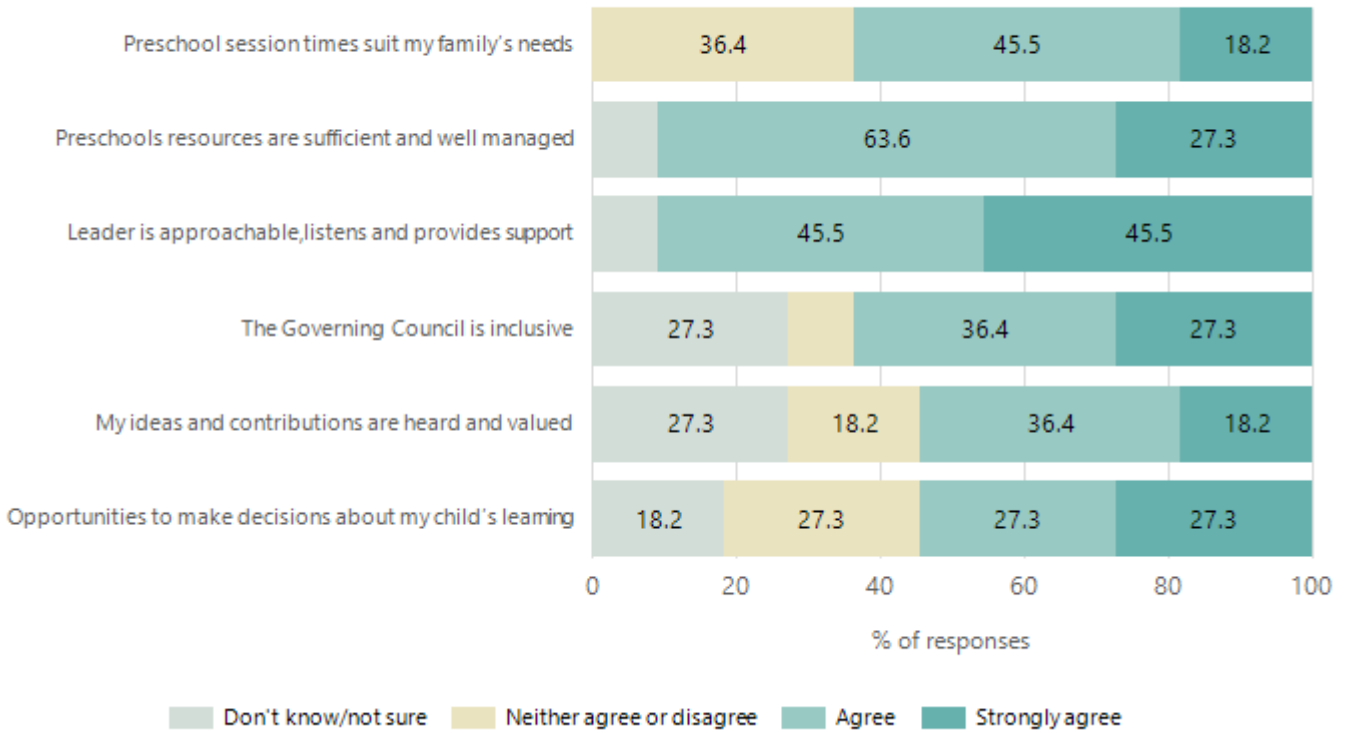
In South Australia, preschool attendance is not compulsory, but it is strongly encouraged. Preschool gives children the best opportunity to develop skills, which prepare them for school. These benefits include establishing positive routines and habits, friendships and connections as well as developing communication, problem-solving and creative skills. All children are entitled to access a preschool program over 4 terms the year before they start school.

In South Australia, all children and young people must be in school from 6 years to 16 years old. They must attend a government or non-government school full time. From age 16 to 17 however, young people must attend school or an approved learning program (such as an apprenticeship, traineeship, accredited course or university). Schools and parents must encourage and support students to come to school every day. Parents and caregivers must make sure their child is enrolled in a school, and attends school all day and everyday it is open, unless a child is sick or has an approved exemption. Teachers and leaders actively follow up when a student misses school, including recording all absences and non-attendance. All schools in South Australia have local attendance procedures governed under the Education and Children's Services Regulations 2020.



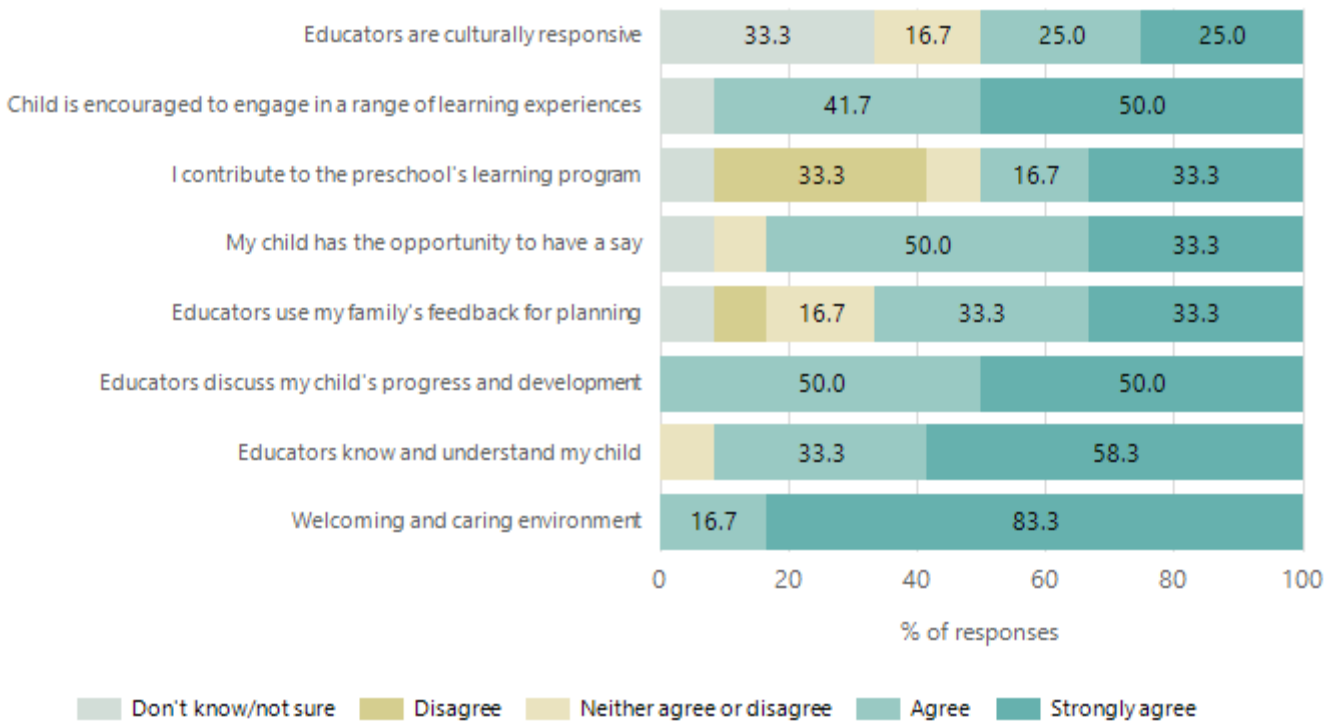
# Preschool Family Opinion Survey

## Governance, Leadership and Management



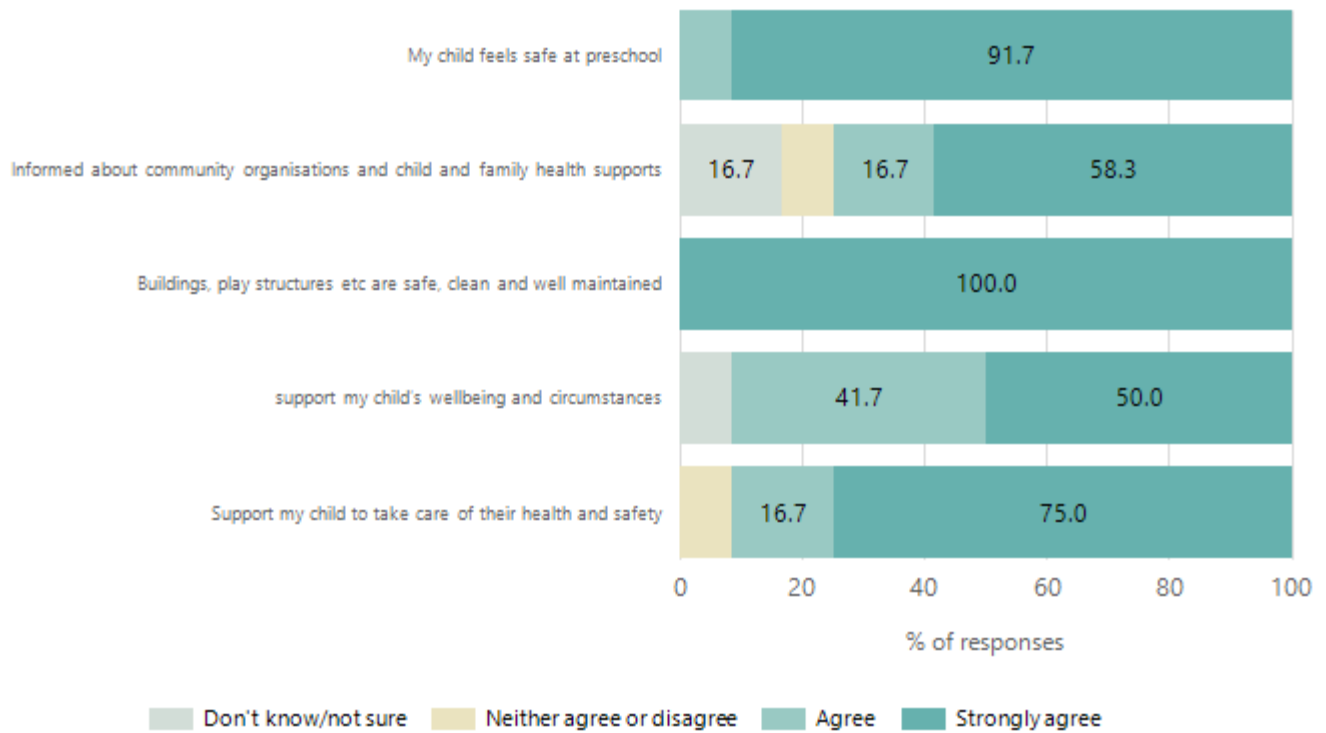
Data Source: 2024 Department for Education Preschool Family Opinions Survey, Term 3 2024.

## Quality of Teaching and Learning



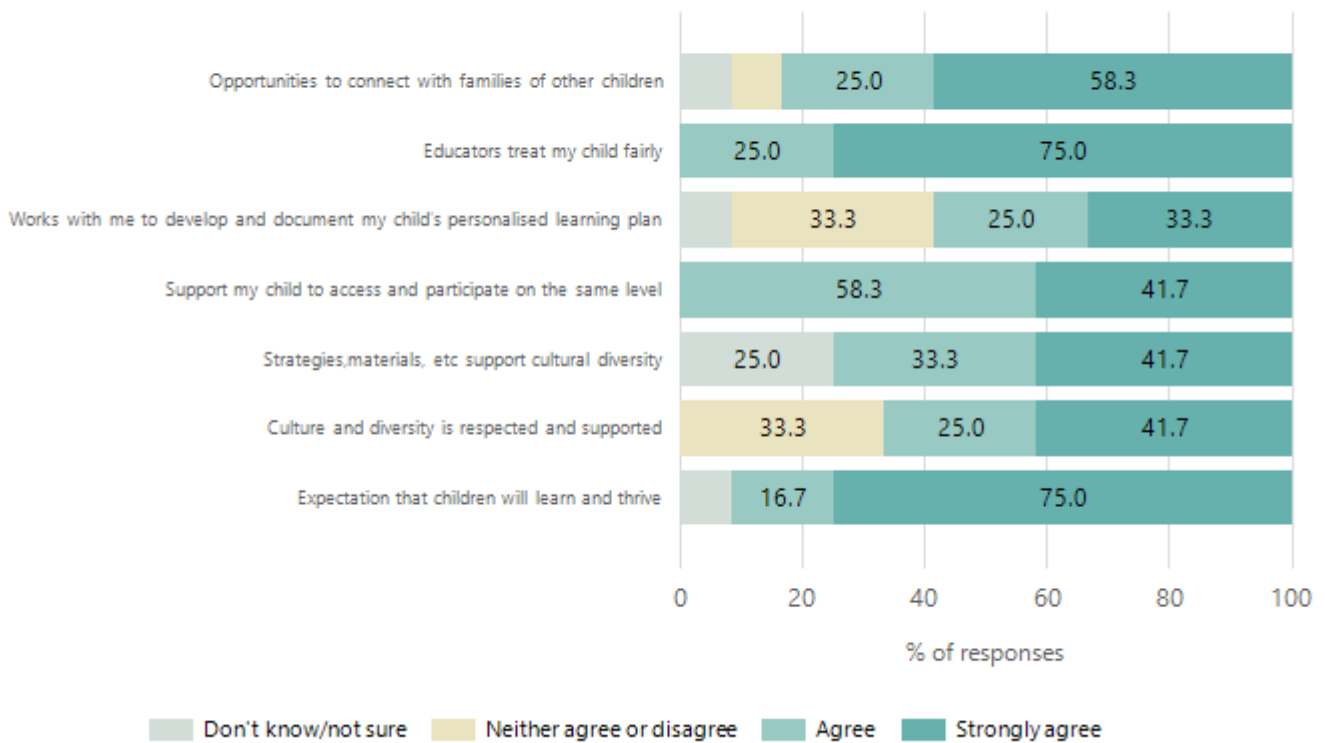
Data Source: 2024 Department for Education Preschool Family Opinions Survey, Term 3 2024.

## Safety, Health and Wellbeing



Data Source: 2024 Department for Education Preschool Family Opinions Survey, Term 3 2024.

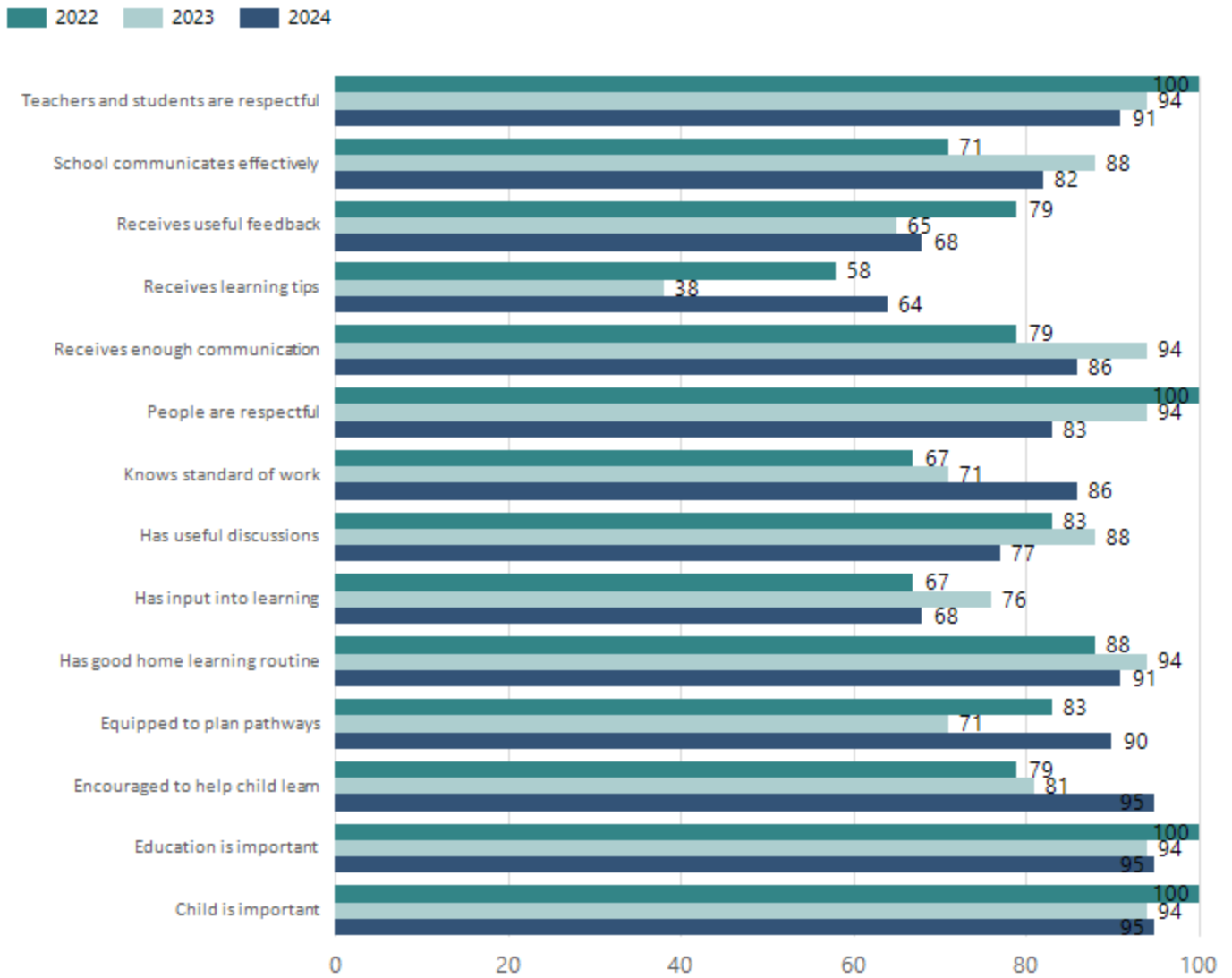
## Support and Inclusion



Data Source: 2024 Department for Education Preschool Family Opinions Survey, Term 3 2024.

# School Parent Opinion Survey Results

Proportion of agree/strongly agree response(%)



Data Source: 2024 Department for Education Parent Opinions Survey, Term 3 2024.

## Destination Schools

Feeder Schools (Site number - Name)	2022	2023	2024
0204 - Kersbrook Primary School			7.7%
0327 - Paracombe Primary and Preschool	76.9%	68.8%	61.5%
0474 - Trinity Gardens School	7.7%		
1540 - Ardtornish Primary School	7.7%		
8006 - St Francis Xavier's Regional Catholic School	7.7%		
8385 - Saint David's Parish School		6.3%	
8421 - King's Baptist Grammar School		12.5%	
9999 - Unknown		12.5%	30.8%

Note: The data is collected in term 3. It does not reflect actual schools enrolled in by existing preschool children. A blank cell indicates there was no data for students enrolled.

Data Source: Department for Education Destination Data Report, 2024.

## Intended Destination

Leave Reason	Number
--------------	--------

Data Source: Department for Education Destination Data Report, 2024. Data extract term 3 2024. Data shows recorded destinations for students that left the school in the previous year. Data is uploaded by schools in term 3 and may not reflect final or total figures at time of report creation.

## Highest Qualifications held by the teaching workforce and workforce composition

All teachers at this school are qualified and registered with the SA Teachers Registration Board.

Qualification Level	Number of Qualifications
Bachelor's degrees or Diplomas	4
Postgraduate Qualifications	3

Data Source: Data extracted from Mandatory Workforce Information Collections as on the last pay date of June 2024. As self-reported by staff in the system.

Please note: Data includes staff who are Actively employed and on extended paid leave. Please note only the highest qualification of the Teaching staff is reported. Excludes any number of other certifications earned.

### Workforce composition including indigenous staff

	Teaching Staff		Non-Teaching Staff	
	Indigenous	Non-Indigenous	Indigenous	Non-Indigenous
Full-Time Equivalents	0.0	5.6	0.0	2.7
Persons	0.0	7.0	0.0	5.0

Data Source: Data extracted from Mandatory Workforce Information Collection as on the last pay date of June 2024.

Please note: Data includes staff who are actively employed and on extended paid leave. "Indigenous category" is self-reported by staff in the system.

## Financial Statement

Funding Source	Amount
Grants: State	\$1,120,803.10
Grants: Commonwealth	\$7,250.00
Parent Contributions	\$17,116.50
Fund Raising	\$3,315.78
Other	

Data Source: School supplied data.